

COMPANY PROFILE



CARPET DIVISION

our company

In an increasingly globalized world, Radici remains true to its philosophy and its vocation.

Right from the start, its watchword has been quality, which is an essential part of Italian products, an essential part of Val Seriana, the valley where we are at home, an area that has historical ties to the world of textiles.

At Radici, tradition marries innovation to put state-of-the-art textile technology at the service of creativity.

our story

1950 Radici saw the light of day as Tappetificio Nazionale, a company weaving carpets on Jacquard looms. Within just a few years, the company had become a player in all the leading international markets. By the 1970s it had almost a thousand employees.

1972 The fitted-carpet division was set up and the Sit-in brand was launched with major investments in tufting machines, dyeing and finishing machinery. In just a few years it became market leader in Italy, gained significant market share in Europe and opened branches in the main European countries and in the USA.

1985 Acquisition of Due Palme, Europe's oldest and largest manufacturer of wool fitted carpets woven on Wilton and Jacquard looms. After installing a ChromoJET printer, Radici became the European manufacturer offering the market the most complete and sophisticated range of products.

2017 Almost 70 years after it was founded, Radici is the only Italian manufacturer of wall-to-wall carpeting through its Radici Contract, Sit-in and Due Palme brands.

our products

What does quality mean?

For us at Radici, quality is creating top grade yarn in Italy using the latest cutting-edge technology.

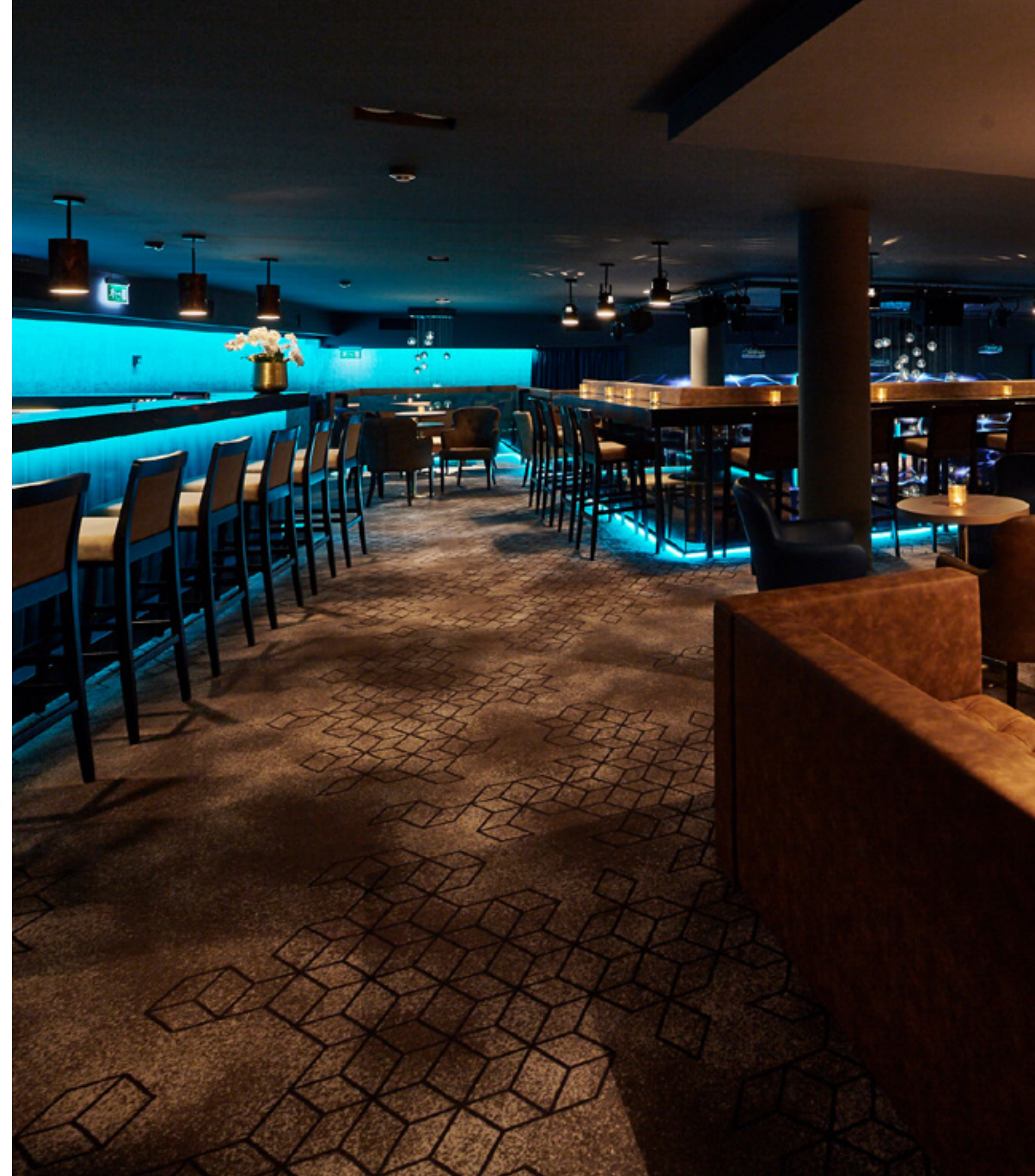
And where progress is not enough, that's where tradition comes into its own, the innate drive to create a product that is not just beautiful but also reliable over the long term, in line with the sustainability that is necessary today.

Alongside the quality of Italian products, Radici offers the widest range of wall-to-wall carpeting available on the market.

CHROMO PROJECT

The definitive range of printed
carpets.

Our modern ChromoJET printing
plant can make any pattern,
without limits to colour, on natural
or synthetic fibre.





HI•DECOR
WOOLDECOR
CP51
VANiTY
WOOLSTYLE
SHINING
ROOMDECOR
PLATINUM

The perfect balance between visual appeal and performance

The elegance of customizable wool

Hard-wearing customizable velvet

The perfect balance between all the components

100% bouclé wool that is both hard-wearing and feels good

The special soft yarn provides an unparalleled sheen

The ideal solution for the rooms

Bouclé that can be customized and is extremely hard-wearing

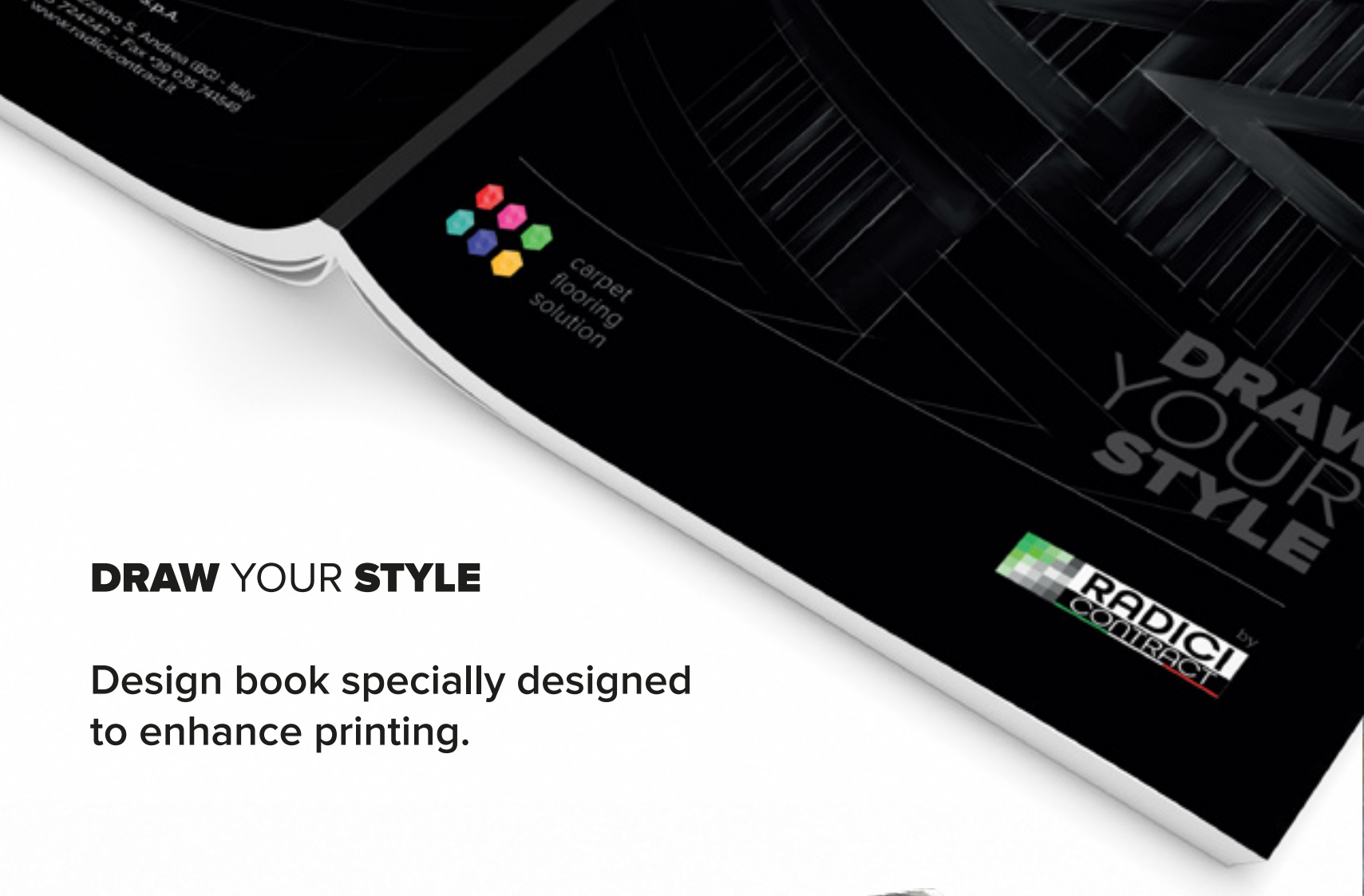
PRINTED **CARPET**[®]
TUFTING TECHNOLOGY **chromoJET**

TOTAL CUSTOMIZATION **100 m²**
STARTING FROM

UP TO **16** **COLORS** **1** **MILION PIXEL/M²**
RESOLUTION

15 **PRINTABLE** **NYLON** **6 & 6.6**
BASES

100% **NEW ZEALAND** **WOOL**[®] **80/20%**
WOOL / PA



DRAW YOUR STYLE

Design book specially designed
to enhance printing.





WOOLSTYLE

WOOLSTYLE is a collection based on 100% bouclé wool.

The combination of sixteen colours for every environment and twenty-six patterns, both modern and traditional, provides ideas that do not constrain but inspire.





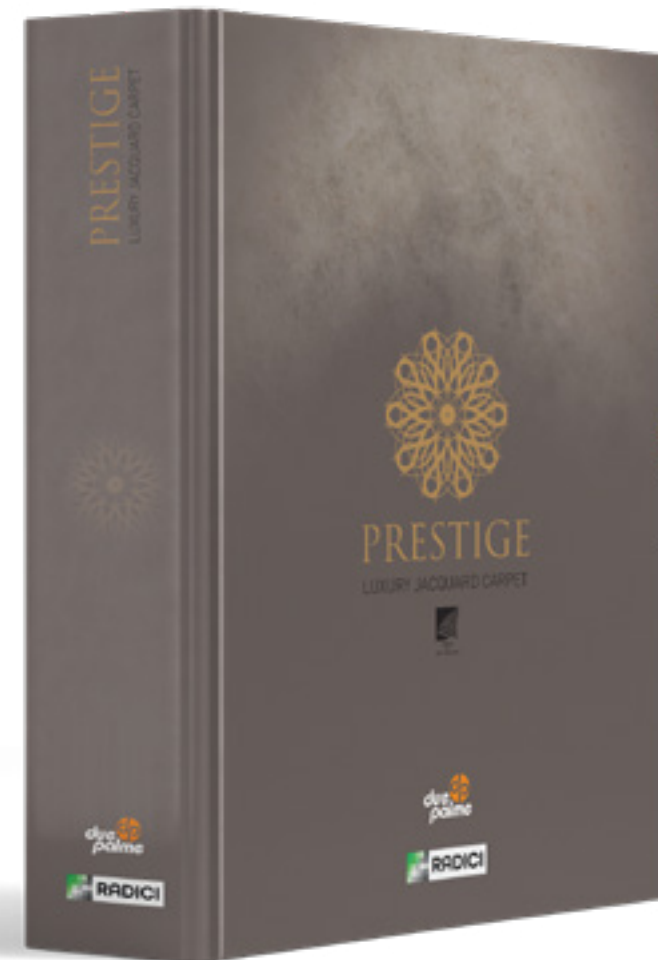
easyprogram

Your project has never been so simple. **easyprogram** is made up of 20 patterns for all needs that can be customized through the 16 colours of the collection, using incredibly hard-wearing polyamide bases, at competitive prices from just 100 m².





The collection aims to customize a class product that draws on the historic tradition of woven carpets.





Abetone Jacquard
Abetone Cut&Loop
Windsor
Navy
Petty
Axminster

The elegance of wool carpet

Customization at two levels

Unbeatable value for money

80/20 for high performance

The quality bouclé

Maximum customization up to 16 colours

WOVEN
CARPET

WILTON JACQUARD
AXMINSTER

TOTAL CUSTOMIZATION **200 m²**
STARTING FROM

2 UP TO 5
COLORS

AXMINSTER
UP TO 16

12 BASES 100%
CUSTOMIZABLE

100% **NEW ZEALAND**
WOOL®

CUT
& LOOP

COMBINATIONS



PRESTIGE

Pattern book encompassing both classic and modern designs for a class product.





by**MOON**

A hand-tufted carpet is a true needlework product where every single tuft has been positioned by hand.

These characteristics enable any precise and distinguished hand-crafted pattern to be created, without limits to colour and dimensions.

Three-dimensional effects that are pleasing to the eye and to the touch can also be achieved by carving technique that consists of cutting grooves into the carpet pile.





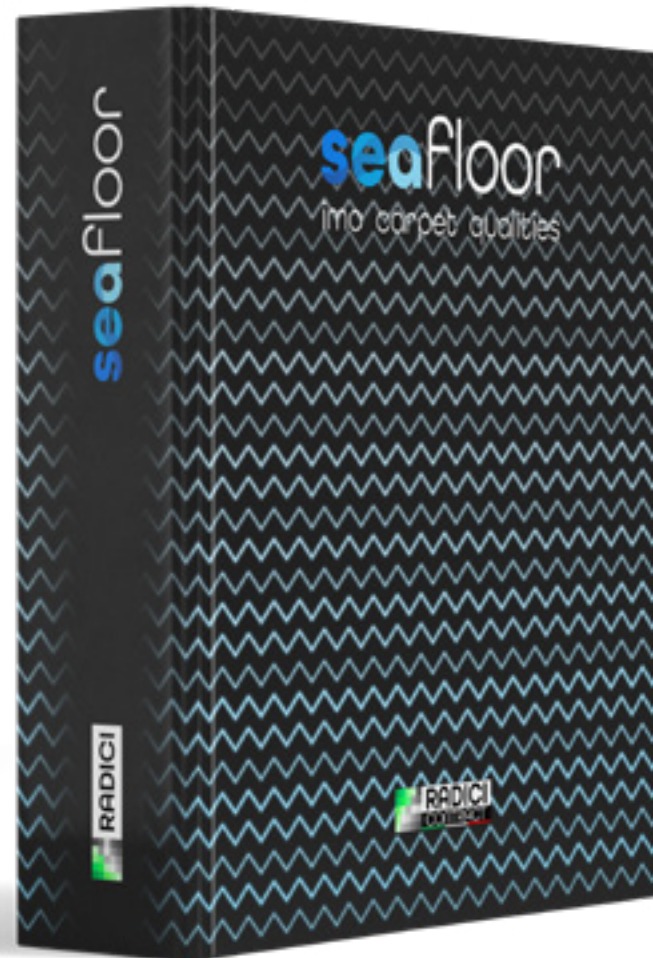
In addition to the pattern book, Radici proposes an elegant all-in-one presentation box containing all the qualities and processes that can be used.





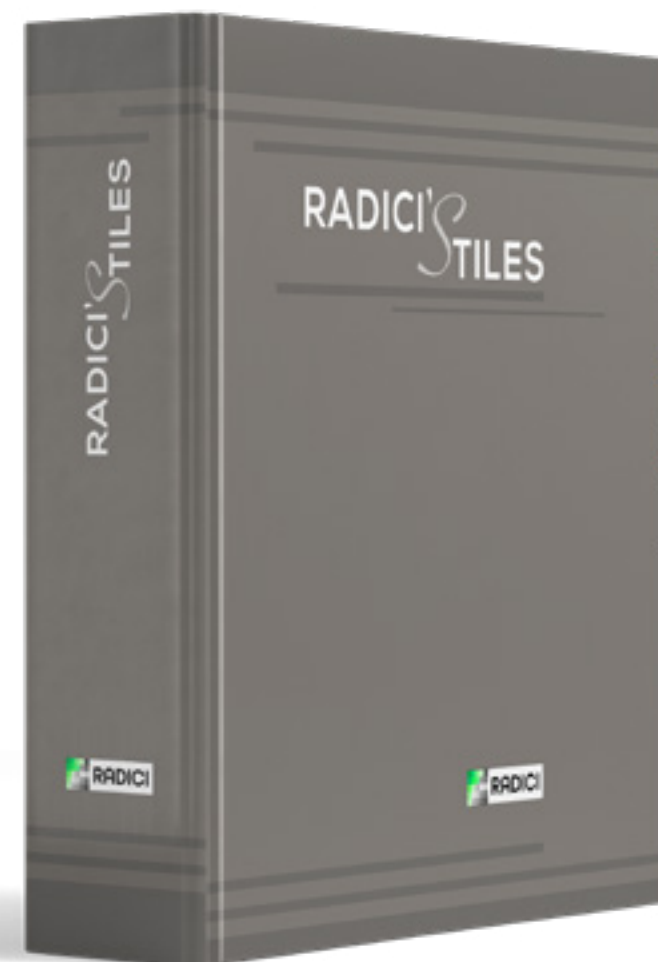
The comprehensive selection on the market for cruises and yachts

A range of fully IMO-certified products, from customizable patterns, to the prestige of a Wilton carpet, to handtufted rugs for the most luxurious yachts. The entire collection is Italian made.



RADICI'S **TILES**

Collection of solution-dyed
carpet tiles.
Available in 50x50 cm and 1x1 m.
Special sizes available
on request.



LUX COLLECTION

A vast range of Wilton
wool products.
10 products in the collection in
over 200 different colours.
Plain-colour and cut&loop carpets.
Available in cut and roll versions.



CLASS COLLECTION

A vast range of polyamide products, consisting of 15 products in the collection totalling over 400 colours. Available in cut and roll versions.



Project 1: Hotel

Customized Design

Our team of designers transforms each idea into a pattern that matches the customer's needs.



ARS 062



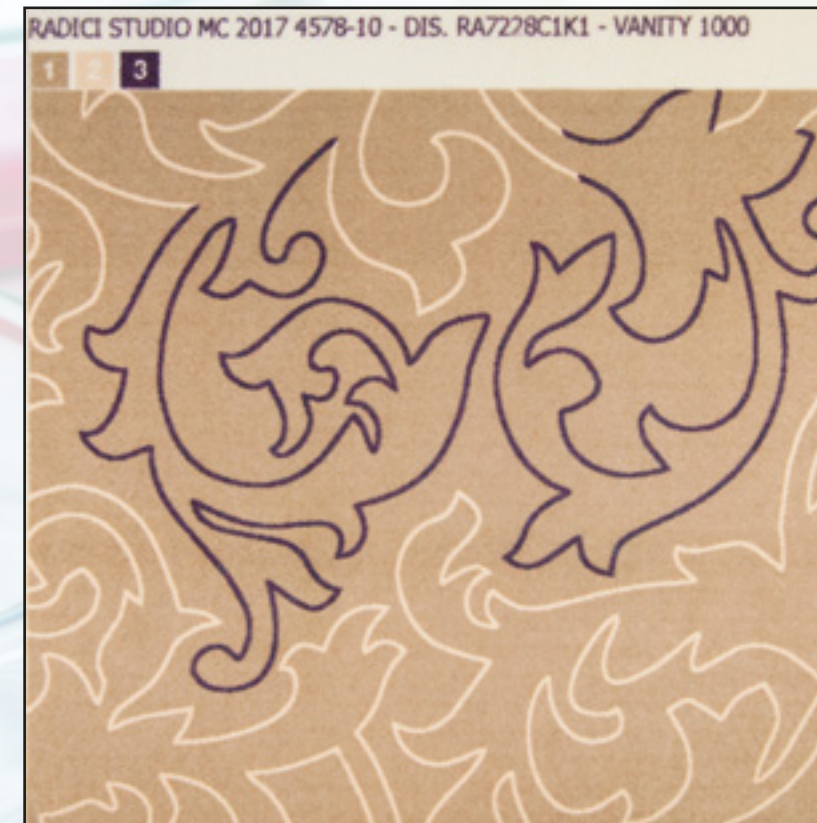
ARS 002



ARS 552

Samples Laboratory

Starting with a selection of ARS – RAL – PANTONE colours, or using a material that has been supplied to us, our laboratory creates samples measuring 1m x 1m with the selected colours to faithfully recreate the final result.



Laying Plan

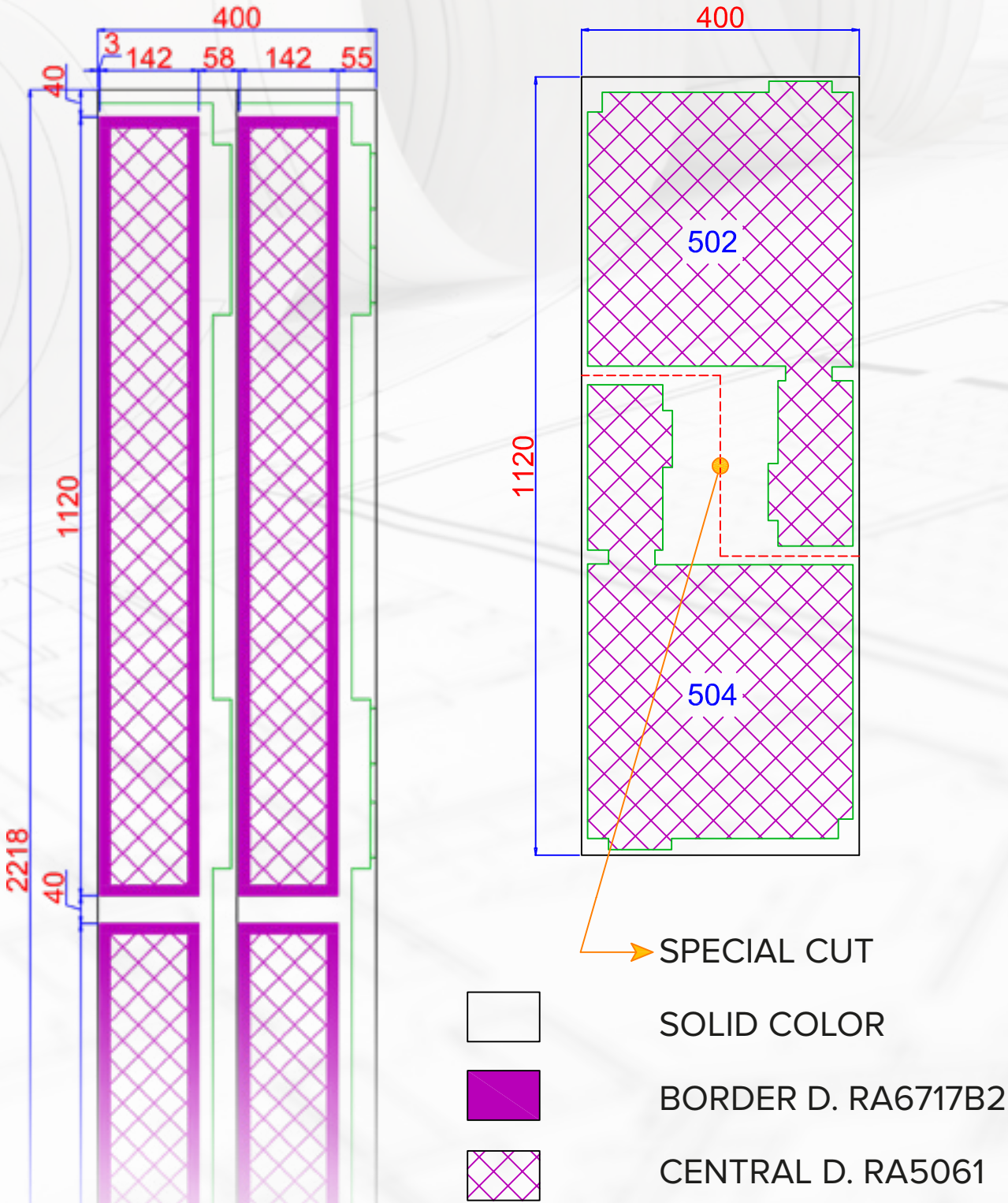
FLOOR	AREA	MTL	H	M²	DESIGN	NOTES
5	ROOMS 502 + 504	11,20	4,00	44,80	RA5061C1	special cut
5	ROOMS 503 + 505	11,20	4,00	44,80	RA5061C1	special cut
5	ROOMS 506	28,50	4,00	114,00	RA5061C2	-
5	ROOMS 507 + 509	11,20	4,00	44,80	RA5061C3	-
5	COMPLETE ROOM 508	28,50	4,00	114,00	RA5061C3	-
4 / 5	CORRIDORS	22,20	4,00	88,80	RA6651C1	88,80

TOTAL TO PRODUCE: 451,20 M²

Upon request, our surveyor can devise bespoke solutions to reduce or eliminate material waste.

CORRIDORS 4th / 5th FLOOR
#1 ROLL OF 22,20 lm x 4 m

ROOMS 502 / 504
#ROLL OF 11,20 lm x 4 m



Layout

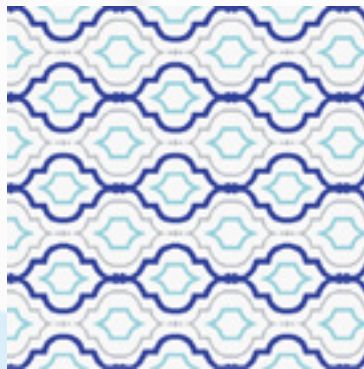


Once everything has been defined, we can create a setting for the areas for a final evaluation of the design and colours.

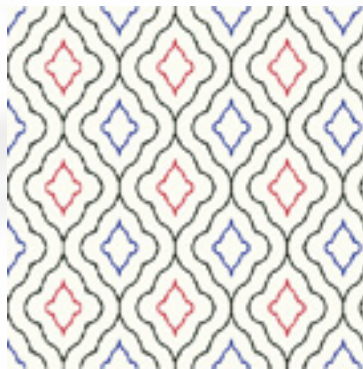
Final Result



Project 2: Yacht Design & Samples



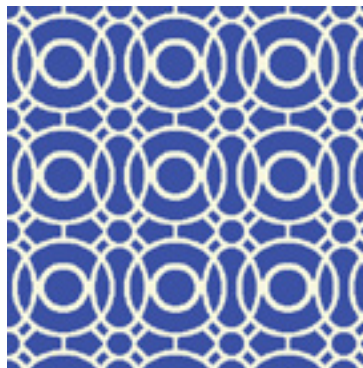
PATTERN 1
100% NEW ZEALAND WOOL
0,37 x 0,3 m
○ ARS 001 // 10 mm CUT PILE
● ARS 001 // 6 mm CUT PILE
● ARS 489 // 6 mm CUT PILE
● ARS 176 // 6 mm CUT PILE



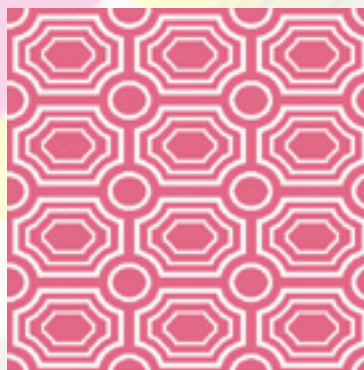
PATTERN 5
100% NEW ZEALAND WOOL
0,28 x 0,3 m
○ ARS 001 // 10 mm CUT PILE
● ARS 076 // 6 mm CUT PILE
● ARS 176 // 6 mm CUT PILE
● ARS 282 // 6 mm CUT PILE



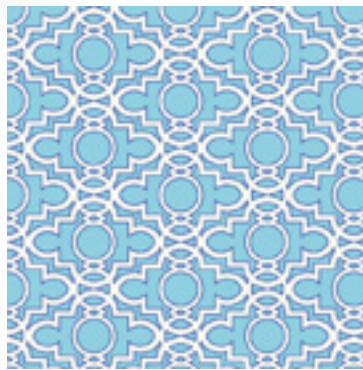
PATTERN 2
100% NEW ZEALAND WOOL
0,3 x 0,3 m
○ ARS 001 // 6 mm CUT PILE
● ARS 328 // 10 mm CUT PILE
● ARS 393 // 10 mm CUT PILE



PATTERN 6
100% NEW ZEALAND WOOL
0,3 x 0,3 m
○ ARS 001 // 10 mm CUT PILE
● ARS 328 // 10 mm CUT PILE



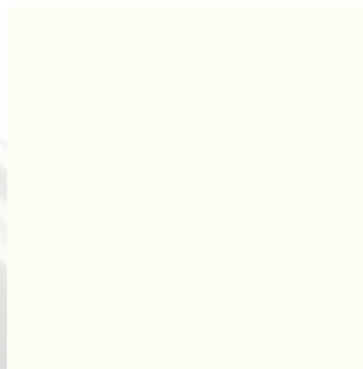
PATTERN 3
100% NEW ZEALAND WOOL
0,4 x 0,3 m
○ ARS 001 // 6 mm CUT PILE
● ARS 055 // 10 mm CUT PILE



PATTERN 7
100% NEW ZEALAND WOOL
0,7 x 0,4 m
○ ARS 001 // 6 mm CUT PILE
● ARS 489 // 10 mm CUT PILE
● ARS 176 // 6 mm CUT PILE

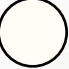











PATTERN 4
100% NEW ZEALAND WOOL
0,4 x 0,3 m
○ ARS 001 // 6 mm CUT PILE
● ARS 393 // 10 mm CUT PILE



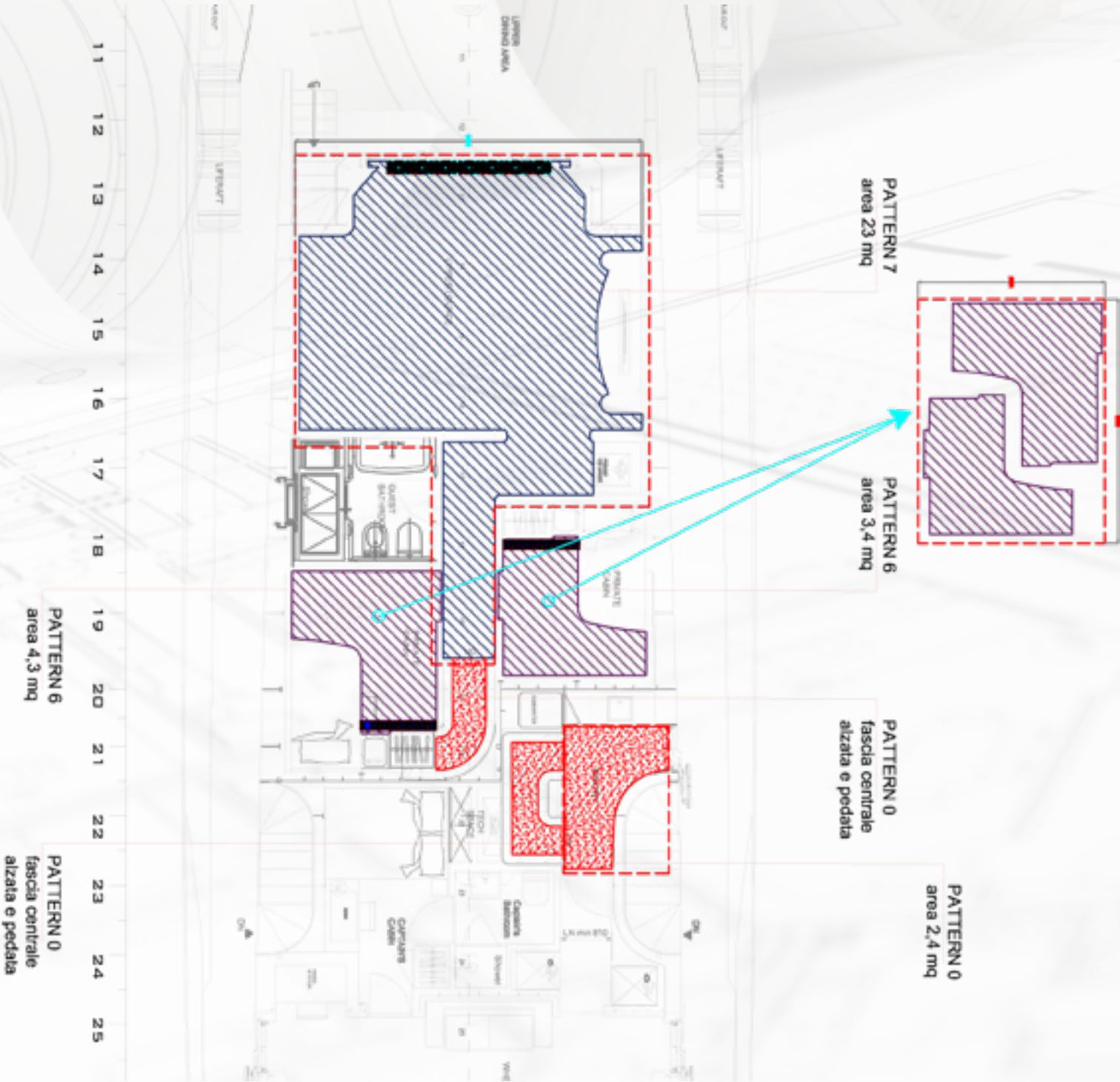
PATTERN 0
100% NEW ZEALAND WOOL
PLAIN CARPET
○ ARS 001 // 10 mm CUT PILE

Laying Plan

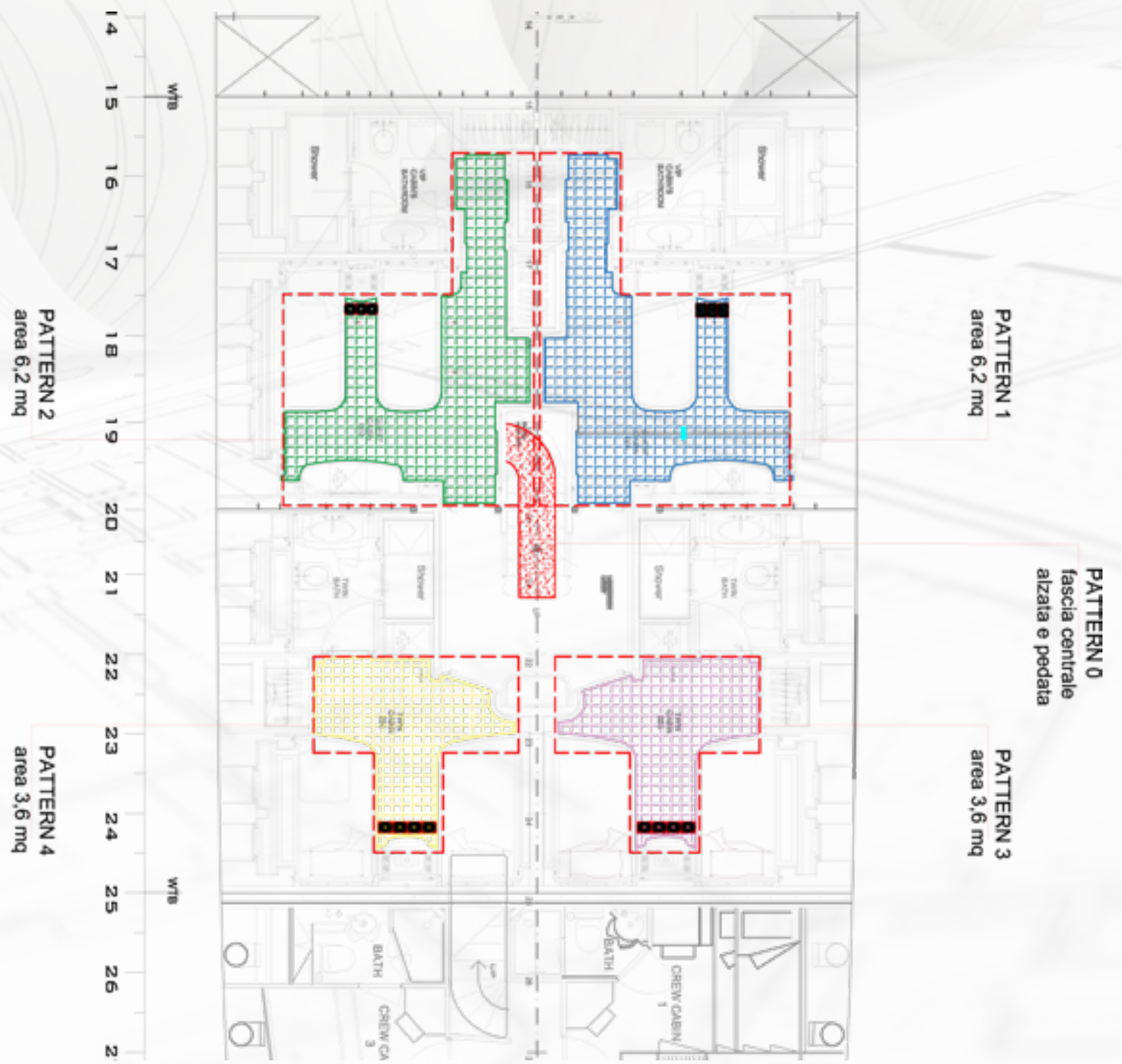
	DESIGN	DECK	AREA	MTL	H	MQ
	PATTERN 00	UPPER	PANTRY	2,35	1,70	4,00
		UPPER	STAIRS	3,60	3,00	10,80
		MAIN	PANTRY	5,00	2,80	7,40
		LOWER	STAIRS	4,70	1,60	7,52
 	PATTERN 01	LOWER	GUEST CABIN	5,00	3,50	12,28
	PATTERN 02	LOWER	GUEST CABIN	5,00	3,50	12,28
	PATTERN 03	LOWER	TWIN CABIN	2,80	2,80	5,15
	PATTERN 04	LOWER	TWIN CABIN	2,80	2,80	5,15
 	PATTERN 05	MAIN	SALON	10,30	5,00	51,50
		MAIN	CORRIDOR	6,20	2,30	10,30
		MAIN	CABIN	4,20	7,00	29,40
	PATTERN 06	UPPER	PRIVATE CABIN	3,90	3,00	11,70
	PATTERN 07	UPPER	LOUNGE	8,05	5,60	31,60

TOTAL TO PRODUCE: 199 M²

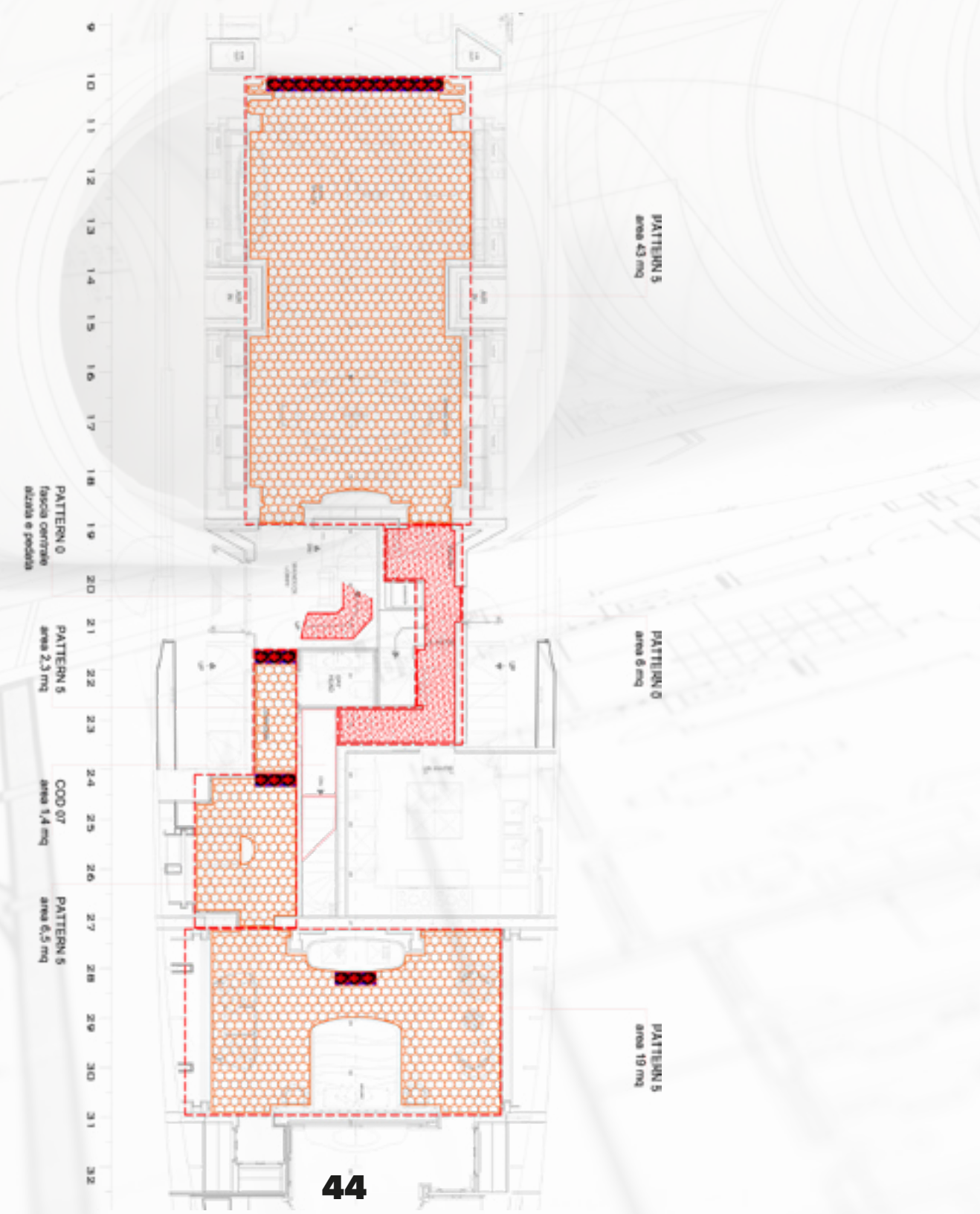
Upper Layout



Lower Layout



Main Layout



Final Result

LOWER TWIN CABIN

PATTERN 04



LOWER GUEST CABIN

PATTERN 01



MAIN STAIRS

PATTERN 00



MAIN SALON

PATTERN 05



MAIN CORRIDOR

PATTERN 05



MAIN CABIN

PATTERN 05



LOWER TWIN CABINS

PATTERN 03/04



UPPER LOUNGE

PATTERN 07





our projects

HOTEL PRINCIPE DI SAVOIA

MILAN ITALY



HOTEL HILTON CAVALIERI

ROME ITALY



HOTEL LUNGARNO

FLORENCE **ITALY**



HOTEL VILLA D'ESTE

CERNOBBIO ITALY



CORY ARCANGEL INSTALLATION

BERGAMO ITALY



HOLLYWOOD MEGAPLEX

PASCHING **AUSTRIA**



HOTEL KEMPINSKY

BANSKO **BULGARIA**



HOTEL SOPHIA

TARTU **ESTONIA**



OPERA GARNIER RESTAURANT

PARIS FRANCE



HOTEL DES ALPES

CHAMONIX FRANCE



HOTEL COLOSSEUM MARINA

BATUMI **GEORGIA**



HOTEL PALACE

BERLIN GERMANY



HOTEL THEOXENIA PALACE

ATHENS **GREECE**



HOTEL ORION

BISHKEK KIRZIGHISTAN



HOTEL GRAND PALACE

RIGA LATVIA



HOTEL CONGRESS AVENUE

VILNIUS LITHUANIA



HOTEL THON BRISTOL

OSLO NORWAY



HOTEL THON SPECTRUM



HOTEL INTERCONTINENTAL AMSTEL

AMSTERDAM **NETHERLANDS**



HOTEL VANDERVALK

HARDERWIJK **NETHERLANDS**



HOTEL SPA IRENA ERIS

POLANICA **POLAND**



GRAND HOTEL PUPP

KARLOVY VARY **CZECH REPUBLIC**



RESTAURANT CAROL

BRAILA ROMANIA



PRINCE PARK HOTEL BILIARD ROOM

MOSCA RUSSIA



EU COUNCIL
BRATISLAVA SLOVAKIA



HOTEL ARTS

BARCELONA **SPAIN**



FSG OFFICES

STOCKHOLM SWEDEN



HOTEL SPLENDID ROYAL

LUGANO SWITZERLAND



HOTEL MISTO

KHARKOV UKRAINE



HOTEL CROWNE PLAZA BELHOUSE

LONDON UNITED KINGDOM



HOTEL ARIA

BUDAPEST **HUNGARY**



LOCK CLUB

BUDAPEST **HUNGARY**



ALTA MODA 2017

PALERMO ITALY



FASHION WEEK 2017

MILAN ITALY



COSTA NEOROMANTICA

COSTA CROCIERE



CUNARD QUEEN MARY II

CUNARD LINE



CUNARD QUEEN ELIZABETH II

CUNARD LINE



CARNIVAL BREEZE

CARNIVAL CRUISE LINE



PONANT LE BOREAL

COMPAGNIE DU PONANT



PONANT L'AUSTRAL



YACHT IPANEMA

MONDOMARINE YACHTS



RADICI PIETRO INDUSTRIES & BRANDS S.P.A.

Via Cavalier Pietro Radici, 19 - 24026 Cazzano Sant'Andrea (BG) - Italy
Tel. (+39) 035 724242 - Fax (+39) 035 741549

info@radici.it - www.radici.it

